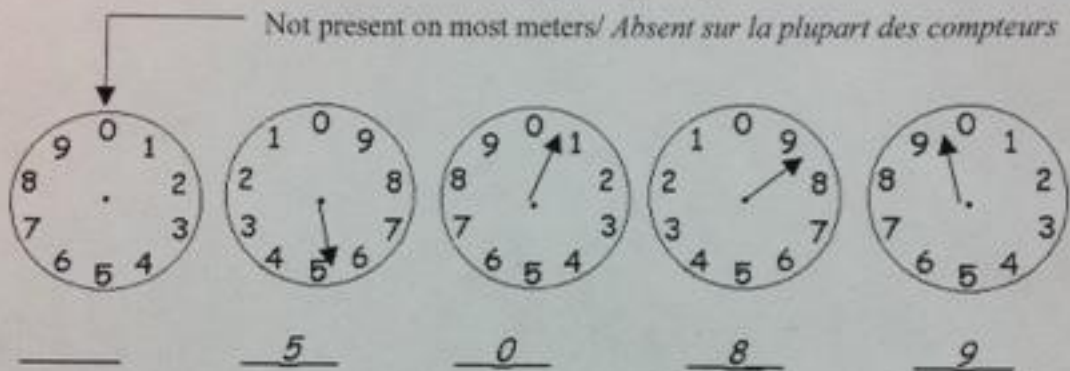


INSTRUCTIONS FOR READING YOUR METER

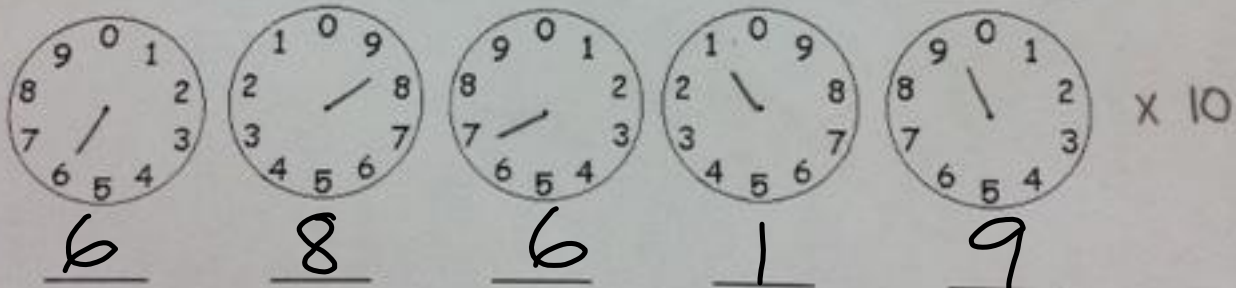
Most meters are estimated every second month. To avoid an estimated billing, phone in your reading during the read period indicated on the front of the bill. Readings phoned at other times will be used to verify your estimate.

1. Please use the dials to draw the exact position of each dial hand on your meter.
2. From the position of the dial hands, record the meter reading on the lines. If the dial hand is between two numbers, please record the lower number. If the dial hand is between 9 and 0, then 9 is the lower number.

For example/ *Exemple*



Meter no _____ N° du compteur _____



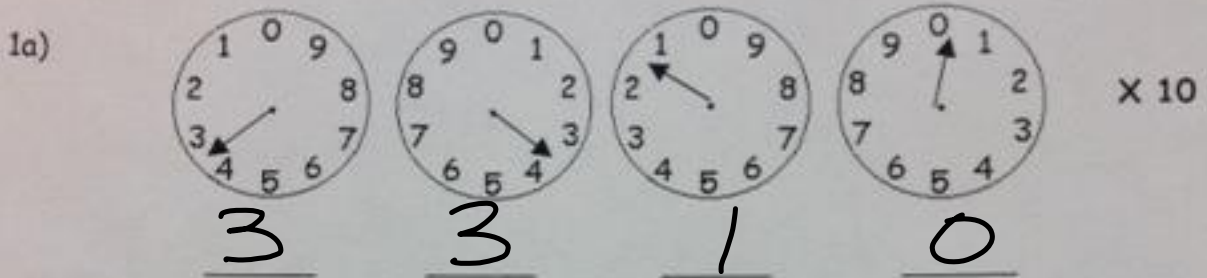
order to calculate the exact consumption we must use a multiplier of 10. This was the rotation of the meters so that accurate readings can be made as consumption increases.

Historically, when electricity consumption was less a multiplier of 1 was used.



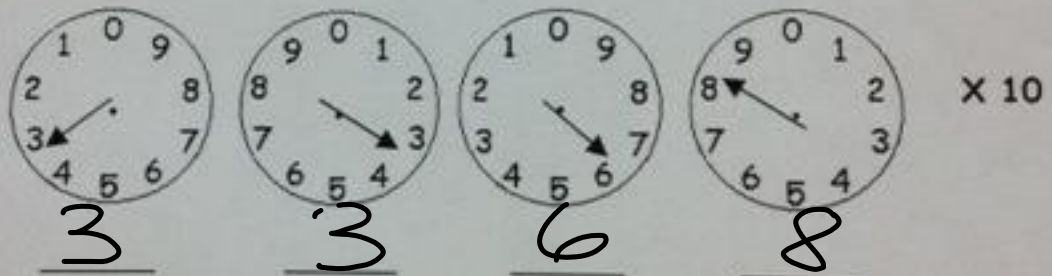
Practice Reading Meters

Read each of the meters below and then answer the questions given.



b) How many kWh does the above reading represent? 33,100 kWh

2a) One month later, the meter in question 1a shows the following reading.



b) How many kWh does the above reading represent? 33,680 kWh

c) How many kWh were used during one month? 580 kWh
(1b reading - 1a reading)

d) If electricity costs six cents per kWh, calculate the billed amount for this customer. \$ 34.08

$$\text{cost} = (\text{kWh}) (\text{time}) (\text{price}) = (580)(0.06)$$

) Take readings from your hydro meter at home for 7-14 consecutive days.

* Make sure that you take the reading at the same time every day and record the numbers on the following blank meters: