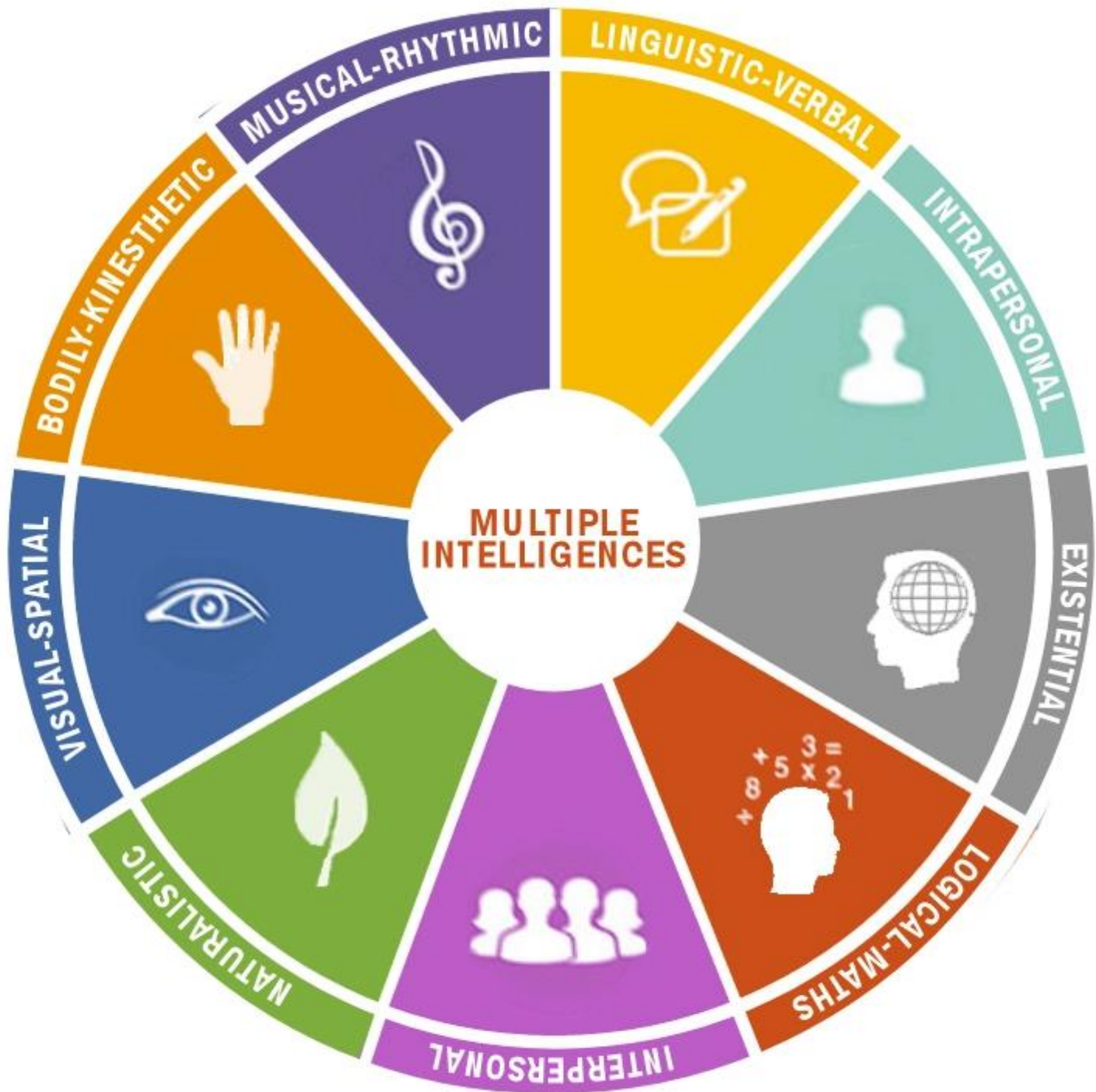


Types of Smart

What does smart mean?

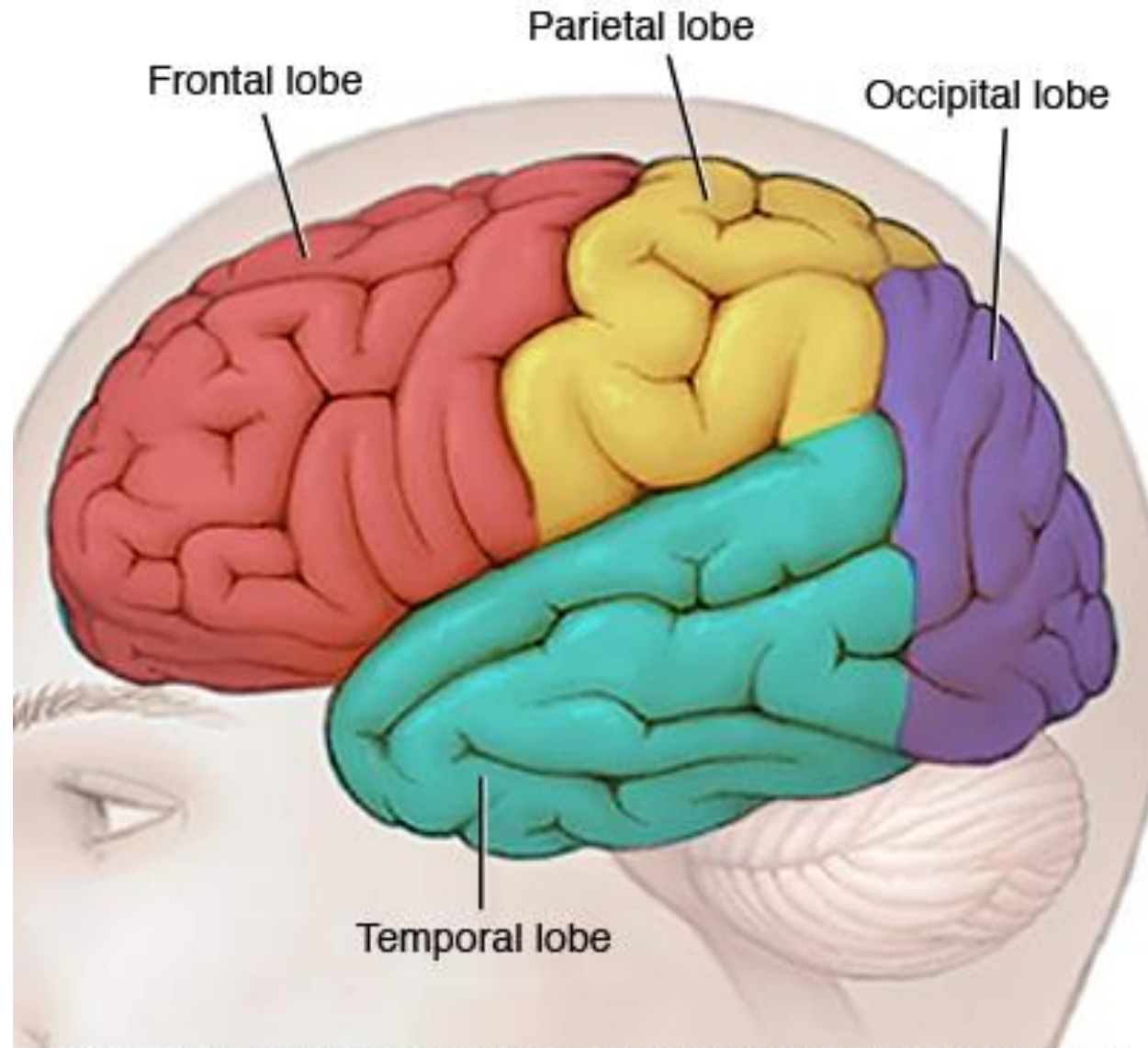
- ▶ Take 5-10 min to brainstorm on your chart paper
- ▶ Share with class



What are your strengths and challenges?

- ▶ Survey time...

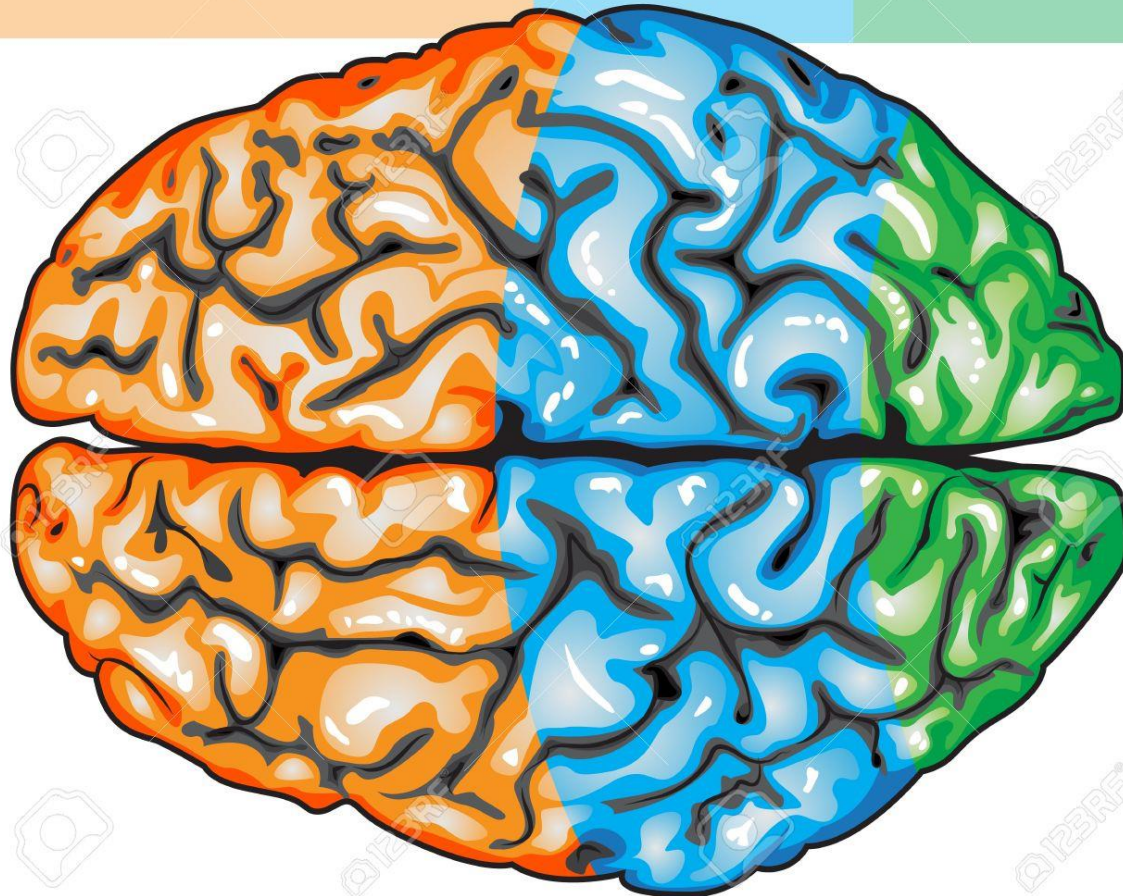
Lobes of the brain



**FRONTAL
LOBE**

**PARIETAL
LOBE**

**OCCIPITAL
LOBE**



Community in School and beyond...

- ▶ Everyone has something to contribute, and everyone sometimes needs help
- ▶ Helping someone means showing them what you have learned without doing the task for them or making them feel incompetent.